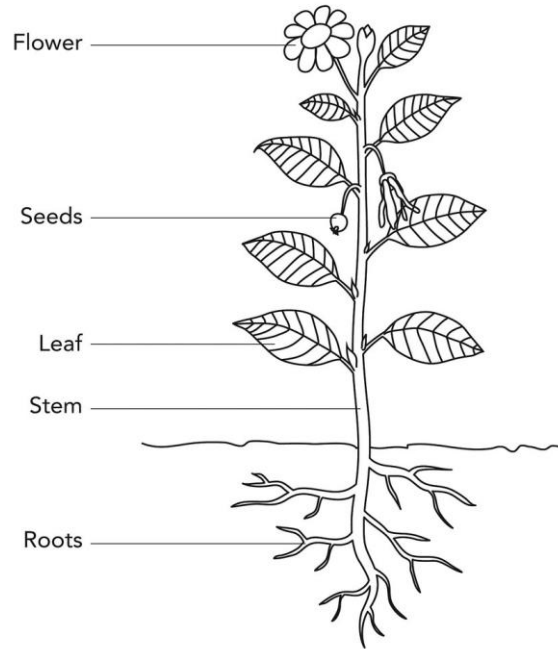


# Darlinghurst Academy Year 3 Summer 1: Are bugs important?

## Vocabulary

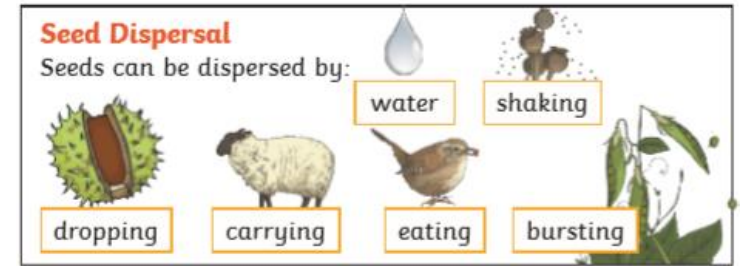
flower	the part of a plant which is often brightly coloured and grows at the end of a stem
fruit	something which grows on a tree or bush and which contains seeds or a stone covered by a substance that you can eat
Leaf/ leaves	the parts of a tree or plant that are flat, thin, and usually green
living	Living things need air, water and food. They move and grow.
plant	a living thing that grows in the earth and has a stem, leaves, and roots
roots	the parts of a plant that grow under the ground
seed	the small, hard part from which a new plant grows
stem	the thin, upright part of a plant on which the flowers and leaves grow
Primary consumer	an organism that feeds on producers. They are always herbivores.
Producer	organisms that make their own food using energy from the Sun.
Secondary consumer	organisms that eat primary consumers for energy
Tertiary consumer	Tertiary consumers eat primary and secondary consumers as their main source of food

## Remember: Parts of a plant

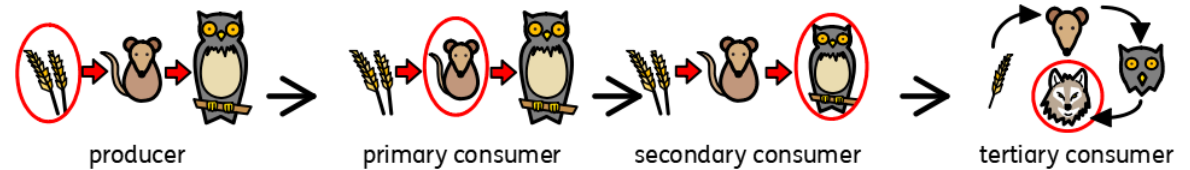


## What do plants need to grow?

- air
- water
- sunlight
- nutrients from the soil
- room to grow
- suitable temperature



## Food chain



A **food chain** is a simple way to show the direction in which **energy** moves from the **producer** to the various **consumers** to the top or **tertiary consumer**. The **producer** (a plant) gets its **energy** from the Sun.