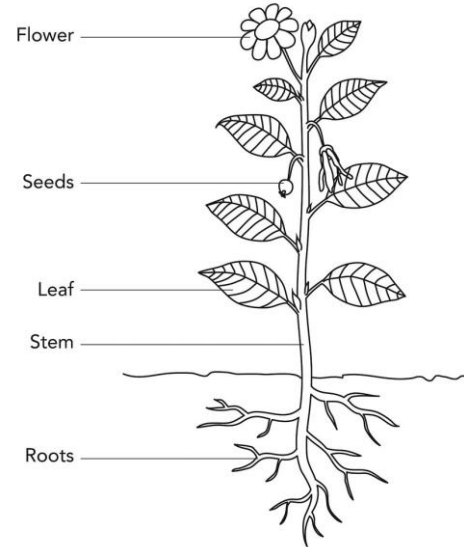


Darlinghurst Academy Year 1 Summer 1: Why is water precious?

Vocabulary

flower	the part of a plant which is often brightly coloured and grows at the end of a stem
fruit	something which grows on a tree or bush and which contains seeds or a stone covered by a substance that you can eat
Leaf/ leaves	the parts of a tree or plant that are flat, thin, and usually green
living	Living things need air, water and food. They move and grow.
plant	a living thing that grows in the earth and has a stem, leaves, and roots
roots	the parts of a plant that grow under the ground
seed	the small, hard part from which a new plant grows
stem	the thin, upright part of a plant on which the flowers and leaves grow

Parts of a plant



Types of wild plants

- A wild plant will grow by itself.
- It does not need to be cared for.
- If it grows somewhere unwanted, it may be a weed.



dandelion



daisy



buttercup



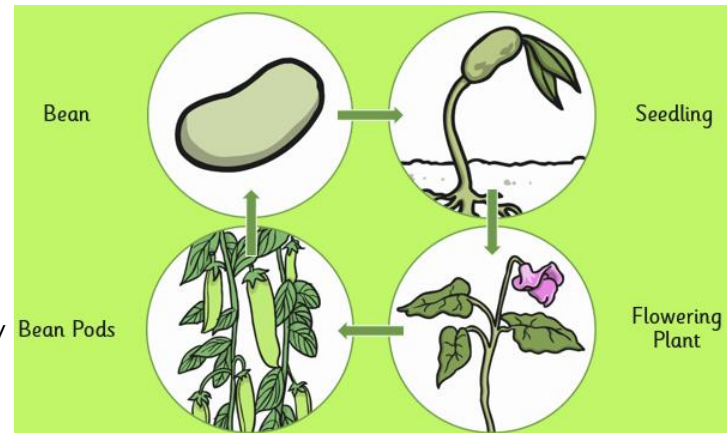
nettle



clover

The lifecycle of a plant

The bean is a seed of the bean plant.



The bean seed will start to take root and a stem will appear.

Pods of beans will grow on the bean plant. Each one of these is a seed.

If the bean plant has water and sunlight, it will grow tall and then it will flower.